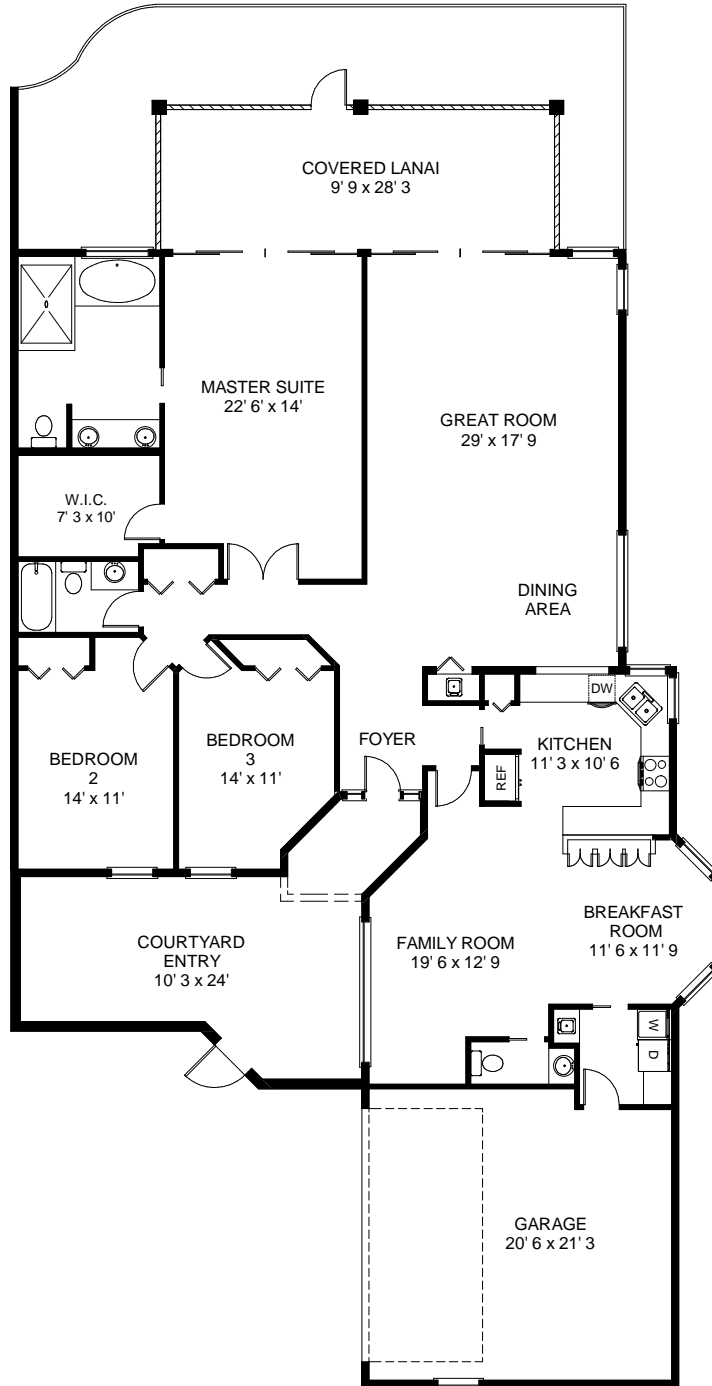


VILLAS OF PELICAN BAY
 6651 TRIDENT WAY
 NAPLES, FL



TOTAL UNDER AIR	2288 sq. ft.
Garage	459 sq. ft.
Covered Entry	50 sq. ft.
Covered Lanai	289 sq. ft.
<hr/>	
TOTAL UNDER ROOF	3086 sq. ft.
Courtyard Entry	295 sq. ft.
Terrace	425 sq. ft.
<hr/>	
TOTAL AREA	3806 sq. ft.